



# GRELA

Mobili componibili / Furniture and Cabinets \_ Meubles et Armoires \_ Schränke und Möbel

## Finiture \_ Finishes \_ Finitions \_ Afwerkingen

**L**

**Laccato lucido**  
Glossy lacquered  
Laqué brillant  
Glänzend Lackiert



**.09L**



**.17L**



**.21L**



**.22L**

**O**

**Laccato opaco**  
Mat lacquered  
Laqué mat  
Matt Lackiert



**.09**



**.17**



**.21**



**.22**

**N**

**Laminato**  
Laminated  
Stratifié  
Holzlaminat



**.03**



**.01**



**.02**



**.05**

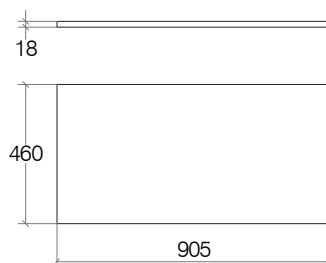
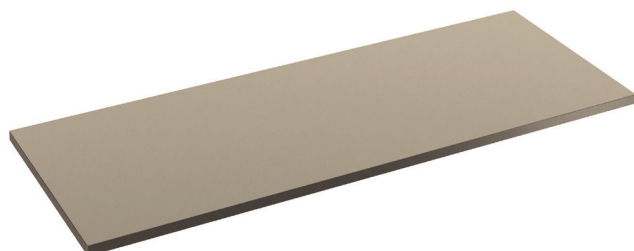





# GRELA

## 8262

**Top per base sospesa 900 mm**

Top for drawer unit 900 mm / Plan pour meuble 900 mm / Platte für Schrank 900 mm



<b>cod. 8262</b>	 <b>6,72</b>	 <b>31,8</b> dm <sup>3</sup>	 <b>1</b>	<b>Laccato opaco</b> Mat lacquered Laqué mat Matt Lackiert
<b>EAN 8005049007289</b>	<b>6,72</b>	<b>31,8</b>	<b>1</b>	

Peso e volume lordo / Gross weight and volume / Poids et volume brut / Bruttogewicht und Volumen



Made in Italy  
Made in Italy  
Made in Italy  
Made in Italy

#### PULIZIA e MANUTENZIONE

Pulire con un sapone neutro, applicare con un panno umido, strofinare leggermente, lasciar agire brevemente e quindi sciacquare con acqua. Infine lucidare con un panno morbido e asciutto. Per macchie di calcare pulire con una soluzione di acqua (80%) e aceto bianco (20%), per un'azione igienizzante aggiungere alla soluzione del bicarbonato di sodio. Asciugare sempre la superficie in modo da evitare le macchie derivanti dall'acqua.

Avvertenze: La resistenza alla corrosione al nichel-cromo si riduce sotto l'azione di acidi e composti alogenati (cloruri, bromuri, ioduri). Non utilizzare mai soluzioni a base di cloro (candeggina), detersivi o spugne abrasive. Evitare la ruggine causata da materiali esterni (ad es. paglietta di acciaio ecc.).

#### CARE and MAINTENANCE

Clean with a mild soap, apply with a damp cloth, rub lightly, leave it briefly and then rinse with water. Finally polish with a soft, dry cloth. To remove the limestone stains, clean with a solution of water (80%) and white vinegar (20%), to sanitize add baking soda. Always dry the surface in order to prevent stains caused by water. Warnings: The corrosion resistance of the steel is reduced by acids and halogen compounds (chlorides, bromides, iodides). Never use solutions containing chlorine (bleach), detergents or abrasive sponges. Prevent rust caused by external materials (eg. Scouring steel, etc.).